




Riverside
Hub


Riverside
Hub

+VG
architecture
structure
interiors


TWO ROW
ARCHITECT

BRANT AVE. VIEW





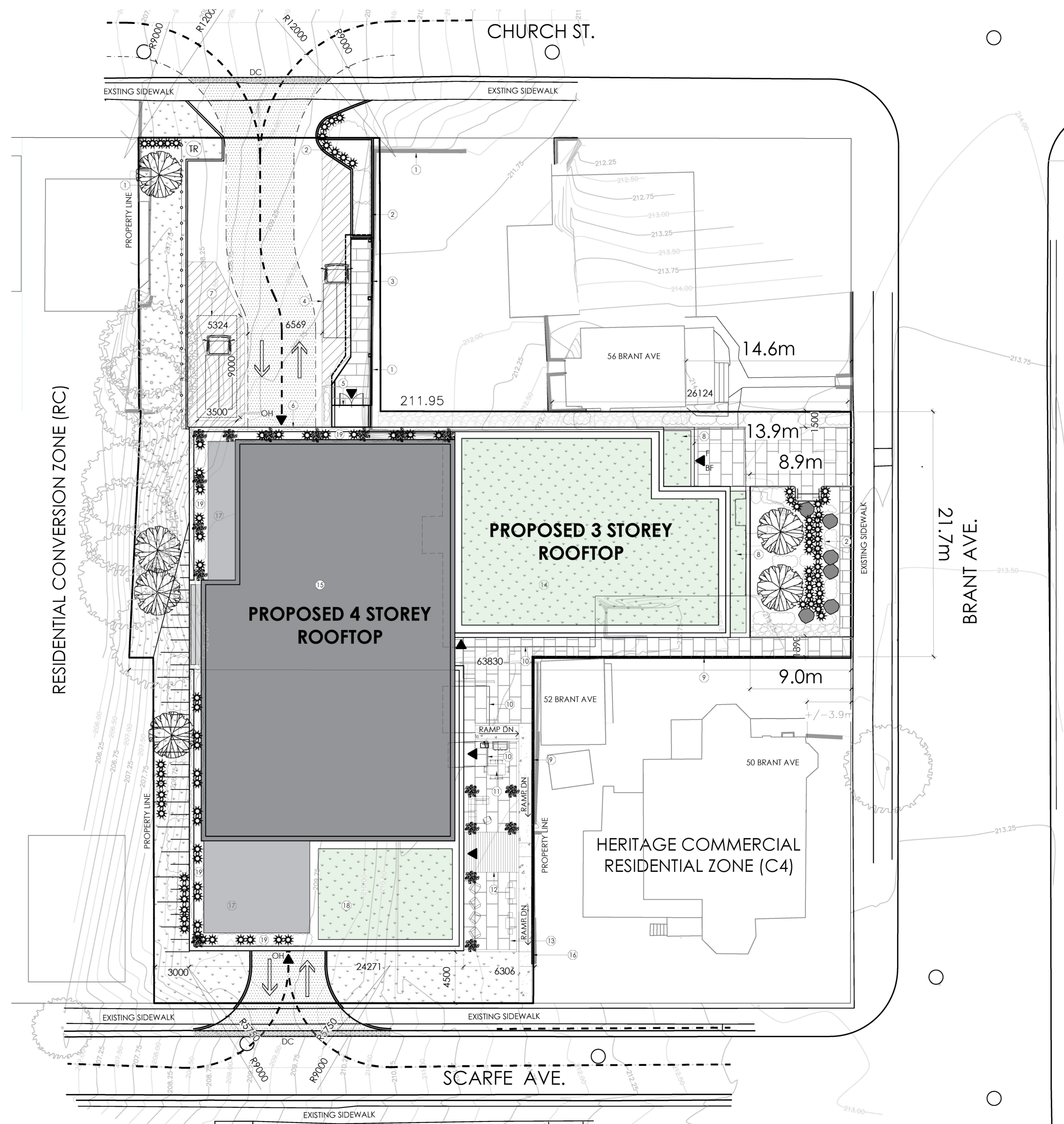


Riverside
Hub

+VG architecture
structure
interiors

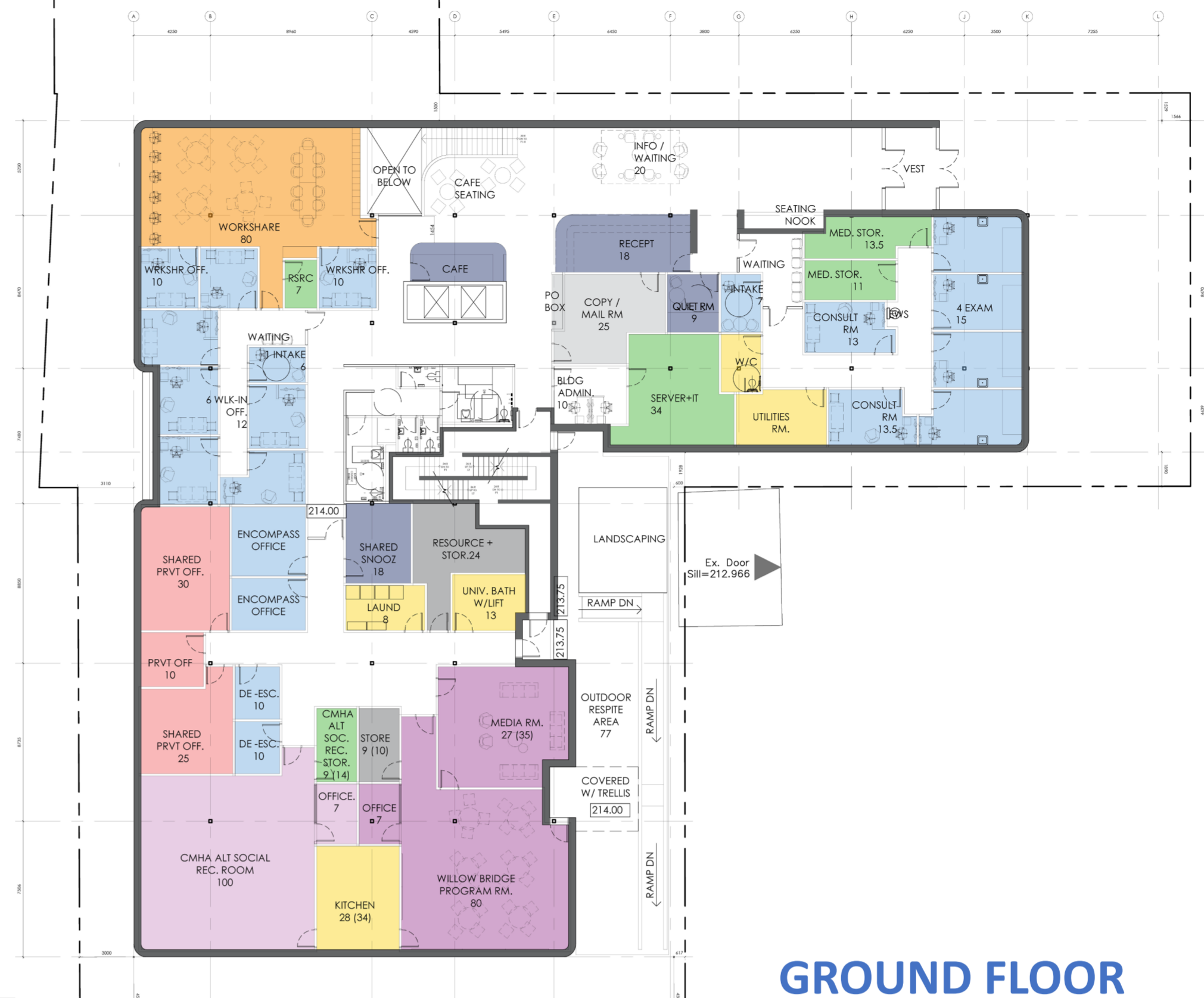
TWO ROW
ARCHITECT

CHURCH ST. VIEW





PARKING LEVEL 1



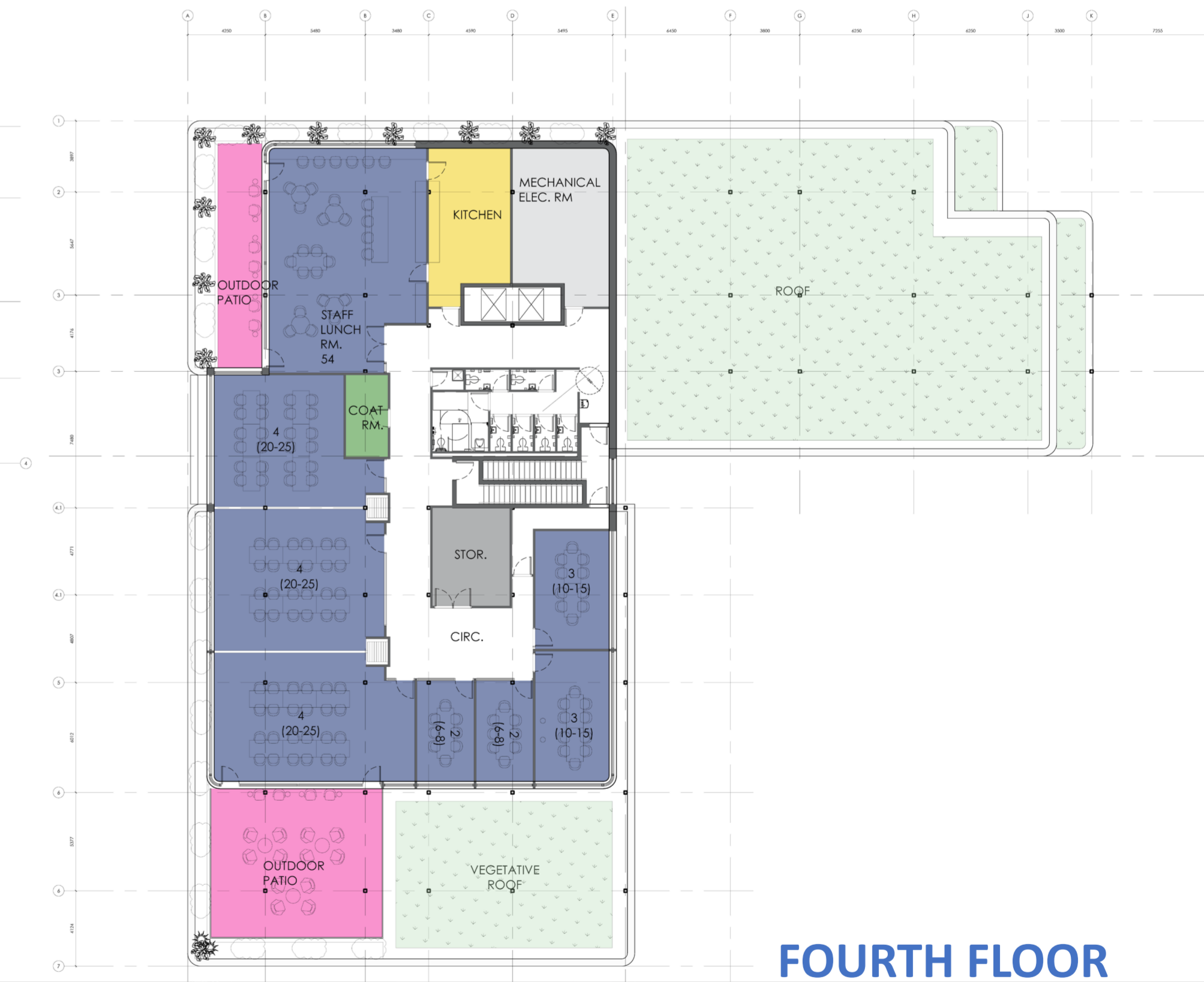
GROUND FLOOR



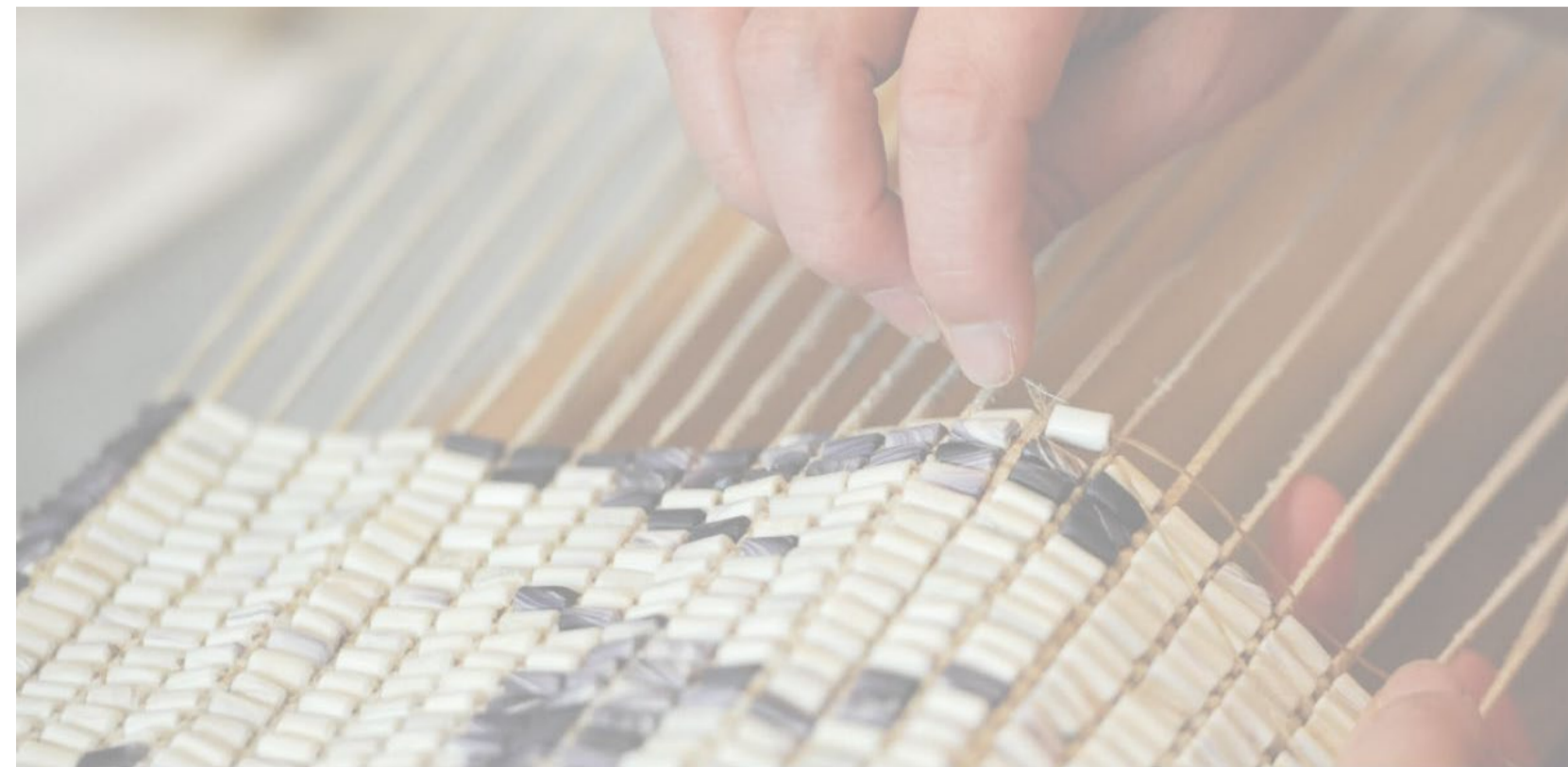
SECOND FLOOR



THIRD FLOOR



FOURTH FLOOR



The Dust Fan Belt—closely tied to the Ever Growing Tree Wampum Belt—is a vital Haudenosaunee symbol representing peace, unity, and responsible leadership. Rooted in the teachings of the Tree of Peace, the wampum design reflects reconciliation, mutual respect, and the clarity required to guide future generations. These teachings parallel the purpose of the Riverside Hub, where individuals can set down burdens, access support, and find safety through an interconnected network of care.

- Symbolizes peace, unity, and the formation of the Haudenosaunee Confederacy.
- Represents the Tree of Peace, under which weapons of war were buried as a commitment to reconciliation.
- The tree’s four roots extend outward, welcoming all who seek peace and belonging.
- The eagle atop the tree symbolizes protection and vigilance over the community.
- The Hub reflects these values by offering a safe place to set down burdens of crisis and hardship.

